

## Live music at the Weekend

Saturday October 8th 2011

Julian Gregory  
& The Classic Jazz Trio  
*from the BBC Phil*

Saturday October 29th 2011

Darren Lloyd  
& The Hot Jazz Ensemble

Saturday November 19th 2011

John Lill, CBE, *piano*

Saturday December 10th 2011

Pemberton Old Wigan  
DW Brass Band

### EXTRA CONCERT

Saturday January 7th 2012

Máire Ní Chathasaigh, *Irish harp*  
& Chris Newman, *guitar*

Saturday February 11th 2012

The Escher String Quartet

Saturday March 3rd 2012

Rosalind Ventris, *viola*;  
Sophia Rahman, *piano*

### EXTRA CHARITY CONCERT

Saturday March 24th 2012

'Help for Heroes'

& West Lancashire Mayoress's Charity

David Daniels, *piano*  
& Ben Smith, *piano*

Saturday April 14th. 2012

Natalie Clein, *cello*;  
Alasdair Beatson, *piano*

Saturday May 19th. 2012

Sunwook Kim, *piano*

## October



Saturday  
8th October 2011  
in The Village Hall, WN8 7DN  
at 7.45 p.m.

Julian Gregory, *violin*  
& The Classic Jazz Trio  
*from the BBC Phil*

Matthew Crompton, *keyboard*  
Paul Turner, *drums*  
Peter Willmott, *bass*

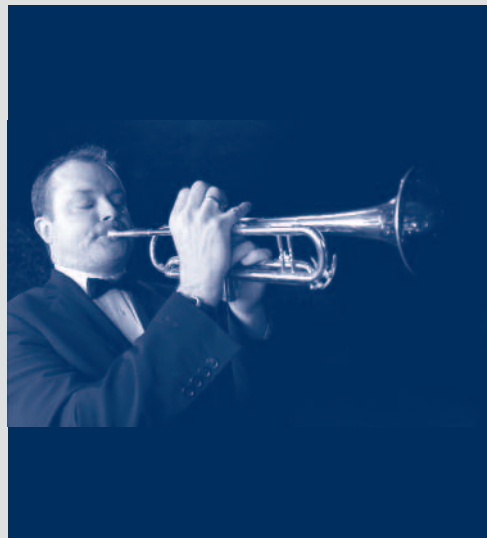
### 'The World through Music'

These highly versatile musicians from the BBC Philharmonic have entertained Douglas Music's audiences many times with school and community music workshops, an evening of Gaelic music, Christmas evenings or brought guest artists, like Jacqui Dankworth and Alan Barnes. They are firm friends & favourites with our audiences and Julian has his own Parbold Fan club!

A whirlwind tour of the world  
through music

**Admission:** £12.00; £5.00 [YP/Student]

## October



Saturday  
29th October 2011  
in The Village Hall, WN8 7DN  
at 7.45 p.m.

Darren Lloyd's  
Hot Jazz Ensemble

Darren Lloyd, *trumpet*  
Duncan Winfield, *trombone*  
Glen Cartlidge, *banjo*  
Carl Barnett, *bass*

### 'Salute to Satchmo'

Salute to Satchmo was first started by Darren Lloyd in 2006 when he took a Master of Arts degree at the University of Salford in Performance and gave a lecture/recital on Louis Armstrong and his influence on 20th century music.

## play

The music of Louis Armstrong

**Admission:** £10.00; £5.00 [YP/Student]

See **CHARITY CONCERT EXTRA**,  
March 24th 2012:  
'The American Piano':  
Joplin, Gershwin, etc.

## November



Photo credit - Roman Goncharov

Saturday  
19th November 2011  
in The Village Hall, WN8 7DN  
at 7.45 p.m.

John Lill, CBE, *piano*

"John Lill is, without a doubt, one of the finest pianists at work today and his undemonstrative appearance on the stage belies a fiercely passionate and romantic temperament."

**See and Heard International, October 2010**

"He is one of the greatest pianists alive today. Across the board, I do not know another pianist who could hold a candle to this magisterial keyboard player. Unsurpassed playing. An intellectual giant and master-craftsman. Beyond words." **The Glasgow Herald**

"As near to perfection as we can hope for." **The Guardian**

Arguably Britain's most well known pianist who has recently celebrated his 60th birthday with a series of concerts throughout the UK, first came to international attention when he won the coveted Tchaikovsky award in Moscow in 1970. Known for his aristocratic interpretations of Beethoven and the great masters of the nineteenth and twentieth century piano repertoire, John Lill performs all over the world and was awarded a CBE in the 2005 New Year's Honours List.

## plays

Wolfgang Amadeus Mozart *Sonata in F, K 332*  
Robert Schumann *Carnival de Vienne', Op 26*  
Sergei Sergeevich Prokofiev *Toccata, Op 11*  
Johannes Brahms *Three Intermezzi, Op 117*  
(Eb, Bb minor, C# minor)

Ludwig van Beethoven *Sonata in F minor, Op 57*  
'Appassionata'

**Admission:** £15.00; £5.00 [YP/Student]

## December



Saturday  
10th December 2011  
in The Village Hall, WN8 7DN  
at 7.45 p.m.

Pemberton Old Wigan  
DW Brass Band



Pemberton Old Wigan Band has a long and outstanding history that dates back to the late 19th century, circa.1877. In recent years the organization has gone from strength to strength and has an established Championship Band led by Mark Bentham. Mark took over the position of musical director July 2008. The Pemberton band has since had notable successes including qualifying for the National Finals at the Royal Albert Hall in 2009 & 2011.

## play

A Christmas Concert

*Music for the Festive Season.*

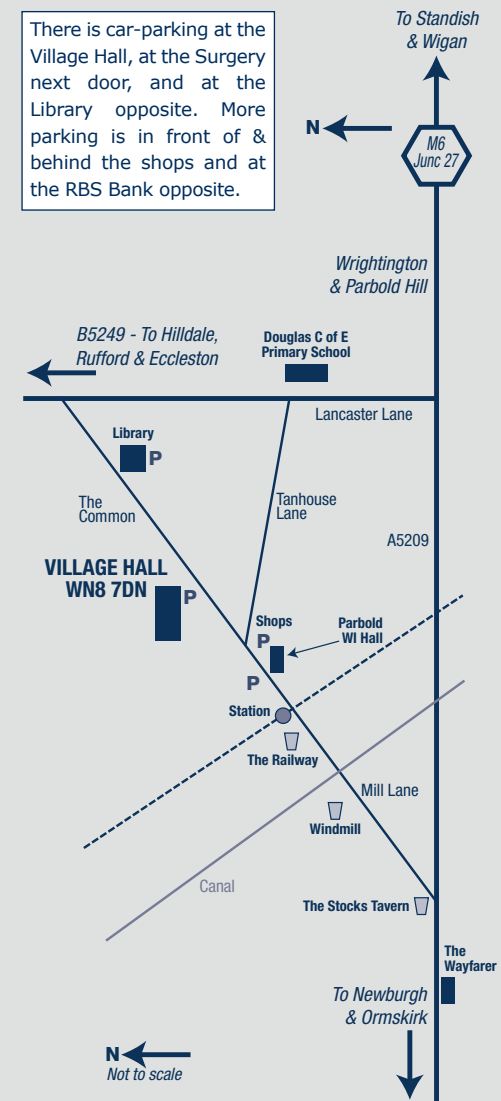
The band is sponsored by Dave Whelan's  
new sport & leisure chain



**Admission:** £12.00; £5.00 [YP/Student]

## VENUE

There is car-parking at the Village Hall, at the Surgery next door, and at the Library opposite. More parking is in front of & behind the shops and at the RBS Bank opposite.



**2011-2012**

**38th Season**

Douglas Music acknowledges  
the support of

The Rainford Trust



The Countess of Munster  
Musical Trust



**mitchell&wright**  
printers ltd

**THE WAYFARER**

COUNTRY PUB &  
RESTAURANT



**www.parbolddouglasmusic.org**

Box Office: 01257 421526

January

**CONCERT EXTRA**



Saturday  
7th January 2012  
in The Village Hall, WN8 7DN  
at 7.45 p.m.

Máire Ní Chathasaigh, *harp*  
& Chris Newman, *guitar*

The celebrated virtuoso partnership of Máire Ní Chathasaigh, "the greatest Celtic harper of our age" and Irish Traditional Musician of the Year, with Chris Newman, England's premier flatpicking guitarist, has toured in twenty-two countries worldwide.

"Music of fire and brilliance from the high-wire act in traditional music" **The Irish Times**

"Máire Ní Chathasaigh is in a class of her own" **The Guardian**

An eclecticism and spirit of adventure that is quite thrilling... Virtuoso playing... bewitching string fantasies and a wonderfully clear and expressive voice" **The Times**

"Dazzling virtuosity... The speed and complexity is to be marvelled at... exquisitely delivered... delightful" **The Daily Telegraph**

play

An enticing cocktail of dynamic Irish dance-music, soulful airs, evocative songs, their own striking compositions, spiked with shots of hot jazz, bluegrass & baroque & served up with exhilarating versatility & inventiveness & "subversive wit"

**Admission:** £10.00; £5.00 [YP/Student]

February



Photo credit – Henry Fair

Saturday  
11th February 2012  
in The Village Hall, WN8 7DN  
at 7.45 p.m.

Escher String Quartet

BBC New Generation Artists, 2010-2012.

Adam Barnett-Hart, *violin*

Wu Jie, *violin*

Pierre Lapointe, *viola*

Dane Johansen, *cello*

"Finely honed technique and a focused ensemble blend are this group's strong suits... a dark ambrosial brew all its own." **The Boston Globe**

"Play with such radiant sincerity and consummate skill." **The Strad**

"The ensemble offered a passionate rendition, conveying the full spectrum of grief and turbulence...Each member of the group played with a glowing tone and insightful musicianship, resulting in a characterful whole." **The New York Times**

The Escher String Quartet has received acclaim for its individual sound, inspired artistic decisions and unique cohesiveness. Championed by members of the Emerson String Quartet the group has served three seasons as resident ensemble of the Chamber Music Society of Lincoln Center's "CMS Two" programme. The ensemble has already performed at prestigious venues and festivals around the world. Within months of its inception in 2005, the Escher String Quartet was invited by both Pinchas Zukerman and Itzhak Perlman to be the quartet-in-residence at each artist's summer festival. International engagements include an extensive tour of China in May '11. The Quartet takes its name from Dutch graphic artist M.C. Escher inspired by Escher's method of interplay between individual components working together to form a whole.

play

'Contrapuntal Arches'

Joseph Haydn *Quartet Op. 76, No. 5*

Béla Bartok *Quartet No. 5*

Ludwig van Beethoven *Quartet Op. 131*

**Admission:** £12.00; £5.00 [YP/Student]

March



Photo credit – Studio London

Saturday  
3rd. March 2012  
in The Village Hall, WN8 7DN  
at 7.45 p.m.

Rosalind Ventris, *viola*

Artist supported by the Countess of Munster Musical Trust

& Sophia Rahman, *piano*

Rosalind Ventris's playing ...overflowed with exuberance and expertise...with intense concentration and conviction flawless intonation...and, above all,...an expressive and eloquent interpretation. **The Cambridge Tab**

... 'the real jewel in this veritable crown of riches was the quite superb playing of Rosalind Ventris'

**The Plymouth Herald**

Rosalind Ventris has been described as a 'remarkable talent'. She performs regularly as a soloist and chamber musician in the UK, playing in venues such as the Royal Festival Hall, St.John's Smith Square, the Barbican, and the Wigmore Hall. She studied at Corpus Christi College, Cambridge, winning all the University's prizes for musical performance, including the Nigel Brown Prize (2008).

Sophia Rahman's work encompasses a wide range of solo and chamber activities. She has recorded over twenty chamber-music discs for several record companies. She has acted as official accompanist at international competitions, adjudicated for UK award bodies, broadcast & appeared as concerto soloist and given master-classes in the UK and across the world.



Photo credit – Athina Strataki

play

Johannes Brahms *Sonata Op.120 No.2*

Paul Hindemith *Sonata Op.11 No.4*

and more

**Admission:** £10.00; £5.00 [YP/Student]

March

**CHARITY CONCERT EXTRA**

in support of 'Help for Heroes'  
& West Lancashire Mayoress's Charity  
[West Lancs. Women's Refuge & Parbold First Responders]



Saturday  
24th March 2012  
in The Village Hall, WN8 7DN  
at 7.45 p.m.

David Daniels, *piano*  
& Ben Smith, *piano*

David began by playing the piano by ear in his teens before formal study. He now plays concerts across the North West, like the opening concert of Halifax's Festival with Ben Smith. David is also a qualified piano tuner & restorer, & works on some of the finest instruments at England's most prestigious venues.

Ben, a former student of Bolton school, will be attending a music college next year. He has a wide and varied concert experience, performing works, like Mussorgsky's 'Pictures at an Exhibition' & as a conductor & orchestrator of several musicals & shows.

play

'The American Piano: Discovering its Voice'  
The music of Joplin, Gershwin, Ives, Barber, & Gottschalk including Gershwin's 'Rhapsody in Blue' for two pianos.

**Admission:** £10.00; £5.00 [YP/Student]

**Driven past a hundred times  
and never been in?**

Pre-concert meals to suit all tastes and budgets with dishes from £4.95. You can chose the country pub, a-la-carte restaurant and modern Italian room.

For menus, call 01257 464600, email thewayfarer@tiscali.co.uk or see Douglas Music, Parbold website.

The Wayfarer is proud to sponsor the local community and you can be sure of a warm welcome.



1-3 Alder Lane Parbold WN8 7NL t: 01257 464600  
e: thewayfarer@tiscali.co.uk w: www.wayfarerparbold.co.uk

April



Photo credit - Sussie Ahlburg

Saturday  
14th April 2012  
in The Village Hall, WN8 7DN  
at 7.45 p.m.

Natalie Clein, *cello*  
& Alasdair Beatson, *piano*

Described by the London Times as a "mesmerising" cellist who "plays everything with passion", **Natalie Clein** is firmly established amongst Britain's leading artists. Born in the UK Natalie first came to widespread attention at the age of sixteen when she won both the BBC Young Musician of the Year and the Eurovision Competition for Young Musicians. Other awards include a Classical Brit for Young British Performer of 2005. Natalie has performed with many of the leading UK and international orchestras. For EMI Classics she recorded two recital discs and the Elgar Cello Concerto with the Royal Liverpool Philharmonic & Vernon Handley. Natalie plays the "Simpson" Guadagnini cello of 1777.

Alasdair Beatson is highly regarded as a distinctive and sincere pianist, equally adept in solo and chamber repertoire. His recent CD of Mendelssohn piano music received high praise in Classic FM Magazine and was awarded the "Outstanding" accolade by International Record Review. He was named a Rising Star in BBC Music Magazine.



Photo credit - Giorgia Bertazzi

'...[Beatson] shapes and weights every phrase with a caring devotion, liquid sonority and gentle cantabile....There are times...where one could scarcely credit a hammer mechanism is involved... highly sensitive playing of rare insight'. **Classic FM Magazine**

play

Claude Debussy *Cello Sonata*  
Henri Dutilleux *Trois Strophes*  
Gabriel Fauré *Cello Sonata No.2 in G minor*  
Anton Webern *3 Little Pieces Op.11*  
Johannes Brahms *Cello Sonata in F major Op.99*

**Admission:** £15.00; £5.00 [YP/Student]

May



Photo credit - Tae-Uk Kang

Saturday  
19th May 2012  
in The Village Hall, WN8 7DN  
7.45 p.m.

Sunwook Kim, *piano*

23 year-old **Sunwook Kim** came to international recognition when he won the prestigious Leeds International Piano Competition in 2006. The competition's youngest winner for 40 years, as well as its first Asian winner, his performance for the finals of Brahms's Concerto No.1 with Mark Elder attracted unanimous praise from the press, and led to concerto engagements with some of the world's finest orchestras as well as recitals throughout Europe. Born in Seoul in 1988, Sunwook Kim began the piano at the age of 3. He gave his debut recital aged just 10 at the Kumho Prodigy Series in Seoul, and this was followed by his concerto debut two years later. Besides Leeds, international awards include the first prize at the 2004 Ettlingen Competition (Germany) and the 2005 Clara Haskil Competition (Switzerland). In Korea he was the first winner of the Daewon Artist of the Year award (2005) and also received the Kumho Musician of the Year Award (2007).

'...the extraordinary young Korean pianist Sunwook Kim... displayed an innate musical instinct which wove itself through the contrasting atmospheres of the score. His technique and the extensive range of his tone colours allowed him to grasp every single nuance...with poise and natural ease....his thoughtful virtuosity...deserves the highest commendation.' **ResMusica.com, Brussels, 2009**

play

Ludwig van Beethoven *Sonata No.31 Op.110*  
Ludwig van Beethoven *Sonata No.32 Op.111*  
Franz Schubert *Sonata in A Major D959*

**Admission:** £12.00; £5.00 [YP/Student]

DOUGLAS MUSIC PARBOLD Lancs  
www.parbolddouglasmusic.org  
Reg. Charity No.:506675

2011 - 2012

Box Office Tel: 01257 421526